

AD Manager Web Part

Web Part Versions: 3.0.0.1 for MOSS 2007
 3.0.0.1 for WSS 3.0
Document Version: 3.0.0.1
Date: 18. June 2008

New User | New Group | Change SSO Credentials Connected with SSO as: DEV\srvsps

	Name	Type	Description
dev.advis.ch	ADVIS	Organizational Unit	no Description
Users			
Computers			
Builtin	Builtin	builtinDomain	no Description
Domain Controllers			
ADVIS	Computers	Container	Default container for upgraded computer accounts
Groups			
Microsoft	Domain Controllers	Organizational Unit	Default container for domain controllers
Service Accounts	PrivUserGroup {09dff2c5-d3df-4865-8fb1-f46863808c6d}	Group	no Description
SRVDEVLBE			
vsrv-tscdev	ReportingGroup {09dff2c5-d3df-4865-8fb1-f46863808c6d}	Group	no Description

CONTENTS

1. LICENCE AGREEMENT	3
1.1 License Grants	3
1.2 License Restrictions	4
1.3 Limitation of Liability	4
1.4 Free Demo vs. Licensed Full Versions	4
1.5 License Activation	5
2. Version History	7
3. Platform	7
4. Known Limitations	7
5. Installation	8
6. Web Part Properties	10
6.1 AD Manager Properties:	10
6.2 AD Manager Css Class:	11

1. LICENCE AGREEMENT

YOU USE THIS PIECE OF SOFTWARE ON YOUR OWN RESPONSIBILITY. ADVIS RESERVES THE RIGHT NOT TO BE RESPONSIBLE FOR ANY DAMAGE CAUSED BY THE USE OF THIS SOFTWARE.

BY INSTALLING AND USING THE SOFTWARE, YOU ARE CONFIRMING YOUR ACCEPTANCE OF THE SOFTWARE AND AGREEING TO THE TERMS OF THE LICENSE AGREEMENT.

IMPORTANT:

THIS SOFTWARE LICENSE AGREEMENT IS A LEGAL AGREEMENT BETWEEN YOU (EITHER AN INDIVIDUAL OR A SINGLE ENTITY) AND ADVIS AG. READ IT CAREFULLY BEFORE INSTALLING AND USING THE SOFTWARE. BY INSTALLING AND USING THE SOFTWARE, YOU ARE CONFIRMING YOUR ACCEPTANCE OF THE SOFTWARE AND AGREEING TO THE TERMS OF THIS LICENSE AGREEMENT. IF YOU DO NOT AGREE TO THE TERMS OF THIS LICENSE AGREEMENT, THEN DO NOT INSTALL THE SOFTWARE.

1.1 License Grants

Your license rights under this license agreement are non-exclusive. In the event that you fail to comply with this license agreement, ADVIS may terminate the license and you must destroy all copies of the Software.

License Grants Single Server License

The **AD Manager V3** Web Part single server license grants you the right to install and use the **AD Manager V3** web part on one SharePoint server (physical server). On this server, the web part can be used on an unlimited number of virtual servers, sites, areas and pages and by an unlimited number of users.

License Grants Server Farm License

The **AD Manager V3** Web Part server farm license grants you the right to install and use the **AD Manager V3** web part on an unlimited number of SharePoint servers (physical servers), as long as these servers belong to the same SharePoint server farm. The term "SharePoint server farm" is defined in this context as a group of SharePoint servers, using the same SharePoint configuration database on the same database server. On these servers, the web part can be used on an unlimited number of virtual servers, sites, areas and pages and by an unlimited number of users.

License Grants Enterprise License

The **AD Manager V3** Web Part enterprise license grants you the right to install and use the **AD Manager V3** web part on an unlimited number of SharePoint servers (physical servers) within your company. On these servers, the web part can be used on an unlimited number of virtual servers, sites, areas and pages and by an

unlimited number of users, as long the users belong to the same company (legal entity).

License Grants Trial License

The **AD Manager V3** Web Part trial license grants you the right to install and use the **AD Manager V3** web part on an unlimited number of SharePoint servers (physical servers) within your company. On these servers, the web part can be used on an unlimited number of virtual servers, sites, areas and pages and by an unlimited number of users.

The trial license will expire at a specified date. After this date, the license becomes a free demo license.

License Grants Free Demo Version

The free demo version of the **AD Manager V3** Web Part can be freely copied, installed and used on as many servers and by as many users as you want.

1.2 License Restrictions

The granted permission is subject to the following restrictions:

1. The origin of this software must not be misrepresented; you must not claim that you wrote the original software.
2. The software may not be included in any part of commercially available software packages which are sold for any value.
3. The software may not be merged, modified, adapted, translated or altered in any form.
4. The software may not be disassembled, inherited, decompiled, reverse engineered, or otherwise broken down to determine source code origin and alter source code logic.

1.3 Limitation of Liability

This software (**AD Manager V3** Web Part) is provided 'as-is', without any express or implied warranty. In no event will the authors be held liable for any damages arising from the use of this software. ADVIS provides no guaranteed technical support for the software aside from the forums on the web site

<http://sharepoint.advis.ch>.

1.4 Free Demo vs. Licensed Full Versions

The only difference between the free and the full versions of **AD Manager V3** is that the free demo version shows a copyright notice at the bottom of the web part and you are not able to save your changes.

IMPORTANT

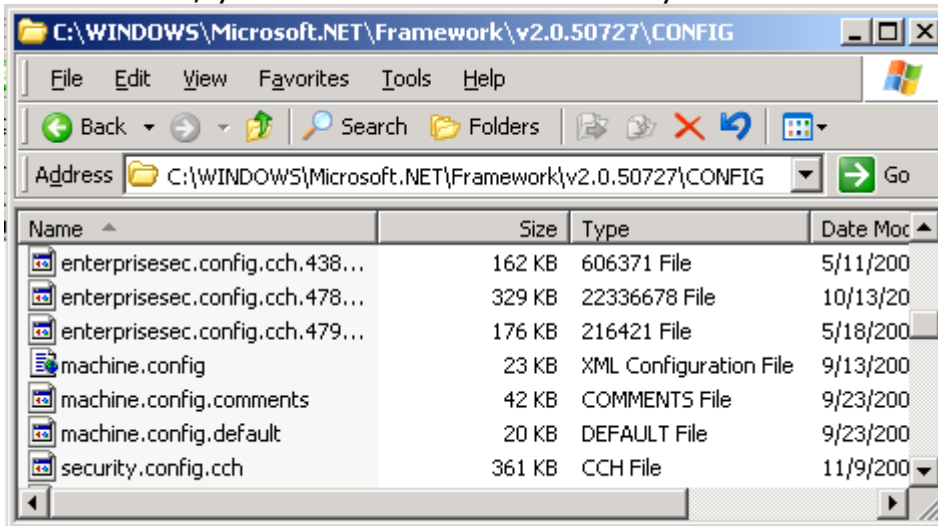
This Web Part has two versions, one for MOSS 2007 (With Single Sign-On) and one for WSS 3.0 (Without Single Sign-On).

1.5 License Activation

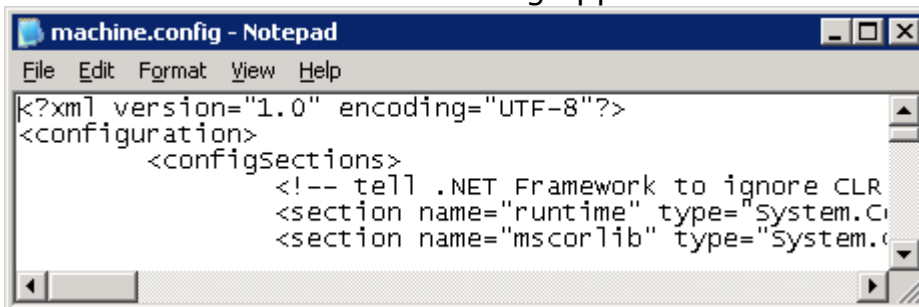
Upon purchasing the web part, you will get a license code (activation code) from us. This license code has to be entered in the configuration file "machine.config" (or web.config) on every server the web part will be used.

Here are the details on how to do this:

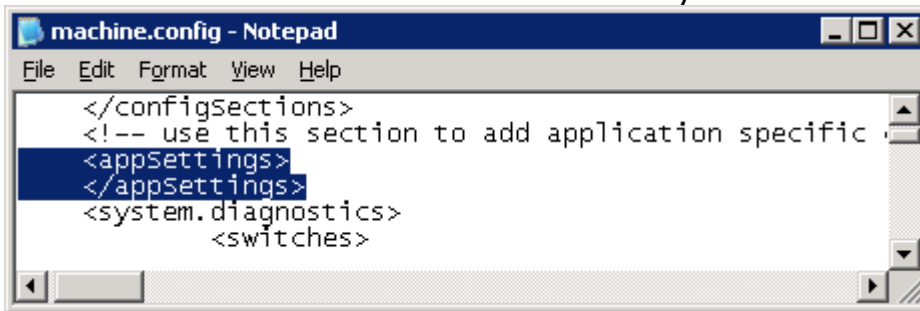
1. Upon purchasing, you will get a license code from us. This license code will look something like this:
FRtroYyaCsNb+7pNdEENJrIJ7/ZowUBuFHuyaV2oXBfinYrBm6IYMW7N+B3c46S5
2. Locate the file machine.config on your SharePoint server. If you run a SharePoint server farm, you need to do this on every front-end web server.



3. Open machine.config with a text editor like Notepad. Machine.config is a plain text file. Do not use a rich editing application like Word to edit it!



4. Locate the <appSettings> section in machine.config. Make sure this section isn't commented out with <!-- ... --> as it is by default.



```
machine.config - Notepad
File Edit Format View Help
</configSections>
<!-- use this section to add application specific
<appSettings>
</appSettings>
<system.diagnostics>
  <switches>
```

5. Insert a line like this:
<add key="ADVIS.WebParts.webpartname.Licensecode" value="liccode" />
Replace *webpartname* with the actual name of the web part (ADManagerV3) and *liccode* with the license code from step 1 above.
Valid web part names at this time are SiteNavigator, AreaNavigator, ChangeMyPassword, ChangeMyPasswordV3, ChangeMyExpiredPassword, ADManager, ADManagerV3 and NavigationTrail.

Example:

```
<add key="ADVIS.WebParts.ADManagerV3.Licensecode"
value="FRtroYyaCsNb+7pNdEENJrIJ7/ZowUBuFHuyaV2oXBfinYr7N+B1f46S5" />
```

(without line break)

6. Save and close machine.config.

2. Version History

V3.0.0.1

- 4 new Fields added (Mobile Phone, Department, Company and Account is locked out)

V3.0.0.0

- MOSS 2007 Compatible Release
- WSS V3 Compatible Release (Without Single Sign-On)
- 2 new Authentication Types (Config entry, Application Pool user)
- Group Management
- Validations (e.g. password complexity)

V1.0.0.2

- Bug Fixes

V1.0.0.1

- Minor Bug Fixes

V1.0.0.0

- Initial Release

3. Platform

AD Manager V3 web part has two different versions:

- A MOSS 2007 compatible version
- A WSS 3.0 compatible version

4. Known Limitations

- 1) This version runs on WSS V3 too, but without Single Sign-On.
- 2) To work properly, the web part needs to be placed into the GAC by using the installation option '-globalinstall'.
- 3) It can take quite a long time if you try to open an OU that contains a large numbers of objects (> 1000) which in turn can lead to connection timeouts on the web server.

5. Installation

- 1) Add the session module and enable session state in web.config:


```
<httpModules>
  <add name="Session" type="System.Web.SessionState.SessionStateModule" />
</httpModules>
<pages enableSessionState="true" enableViewState="true"
  enableViewStateMac="true" validateRequest="false" />
```
- 2) Copy ADManager_V3.0.0.1_MOSS.CAB to a directory on your MOSS 2007 server.
If you use WSS 3.0 copy ADManager_V3.0.0.1_WSS.CAB on a directory on your WSS 3.0 server.
- 3) Run stsadm.exe to register the web part the way you like:
e.g.:
For MOSS 2007:
STSADM.exe -o addwppack -filename C:\WebParts\ADManager_V3.0.0.1_MOSS.CAB -globalinstall

For WSS 3.0:
STSADM.exe -o addwppack -filename C:\WebParts\ADManager_V3.0.0.1_WSS.CAB -globalinstall

Please consult your SharePoint documentation or the command line help (stsadm.exe -help) for more information about installing web parts with stsadm.exe.

Skip the following steps if you plan to use ADManager without the SharePoint Portal Server Single Sign-On Service or when you use the WSS 3.0 Version of the Web Part.

- 4) Ensure that you have properly installed and configured the Single Sign-On Service.
Please consult your SharePoint documentation on how to perform these tasks.
- 5) Create a new enterprise application definition:
Application and Contact Information
Display name: enter your preferred name for this definition
e.g. "Active Directory Management Credentials for Your Company"
Application name: enter exactly the following string: "ADManagerV3"
(without the double quotes)

Contact e-mail enter the e-mail address of the responsible person address:

Account type

Choose as you desire between Group or Individual

Logon Account Information

IMPORTANT: strictly follow the ORDER of the fields. You can alter the display name if you want.

Field 1:	Display Name: Username Mask: No
Field 2:	Display Name: Password Mask: Yes
Field 3:	Display Name: Domain Mask: No

Skip the following steps if you plan to use ADManager without the configuration entry to connect to Active Directory.

- 6) Identify a user account with the necessary access rights to access and read Active Directory information.
- 7) Add a new Section to machine.config or web.config at the end of the <configSections>-section (but before the </configSections>-tag):

```
<section name="ADVIS.WebParts.ADManagerV3"
type="ADVIS.WebParts.Configuration.ADManagerSection,
ADVIS.WebParts.ADManagerV3, Version=3.0.0.1, Culture=neutral,
PublicKeyToken=2fb4ce642a9762e6" />
```

- 8) Add the user credentials for impersonation under the <configuration>-Section in this new Section:

```
<ADVIS.WebParts.ADManagerV3>
  <ImpersonationCredentials>
    <credential key="UserCredentials"
      username="Domain\Username" password="12345" />
  </ImpersonationCredentials>
</ADVIS.WebParts.ADManagerV3>
```

- 9) To encrypt this section use aspnet_regiis.exe*:
Go to start – run – type "cmd" init and press enter.
Change directory:

```
cd "C:\WINDOWS\Microsoft.NET\Framework\v2.0.50727"
```

Encrypt the section**:

```
aspnet_regiis.exe -pef "ADVIS.WebParts.ADManagerV3" "physical-path-to-your-config-file-directory" and press enter.
```

* To get help for this command, type "aspnet_regiis.exe /?"

** To decrypt the section change -pef to -pdf

- 10) To use the Application Pool user as Impersonation user just check the option in the Authentication Types dropdown. The logged in user must have the necessary access rights to get the Application Pool ID from the IIS.

6. Web Part Properties

For information on the management of Active Directory user accounts/groups and their properties, please consult your Active Directory documentation

6.1 AD Manager Properties:

Fully Qualified Domain Name or Path

Property name: FullyQualifiedDomainName

Description: Fully qualified domain name of the Active Directory domain (e.g. "mydomain.com) -or- path to an organizational unit (OU) in LDAP notation (e.g. "mydomain.com/OU=Team,DC=mydomain,DC=com")

Values: <string>

Default: "Enter your AD domain, e.g. mydomain.com"

Authentication Types

Property name: AuthTypes

Description: Use this property to specify which authentication method the ADManager should use to connect to your Active Directory. If you use Local_Auth, ADManager tries to connect to Active Directory by using the credentials of the currently logged on user. Please be aware: If your SharePoint web site uses Integrated Authentication and you use Local_Auth, you will probably face the problem known as the "ASP.NET double-hop issue" and ADManager won't work. Caution: Entry and IIS_App_Account may cause a security risk.

Values: SSO (Only MOSS Version), Entry, IIS_App_Account, Local_Auth

Default: Local_Auth

6.2 AD Manager Css Class:

Menu Bar Css Class

Property name: CssClassMenuBar

Description: If specified, this will be applied to the menu bar on the top of the WebPart.

Values: <string>

Default: ""

Tree Item Css Class

Property name: CssClassTreeItem

Description: If specified, this will be applied to all the tree items.

Values: <string>

Default: ""

Selected Tree Item Css Class

Property name: CssClassTreeSelected

Description: If specified, this will be applied to the selected tree item.

Values: <string>

Default: ""

Content Location Bar Css Class

Property name: CssClassContentBar

Description: If specified, this will be applied to the bar, displaying the current location, on the top of the object list.

Values: <string>

Default: ""

Content Head Css Class

Property name: CssClassContentHead

Description: If specified, this will be applied to the header of the object list.

Values: <string>

Default: ""

Content Item Css Class

Property name: CssClassContentItem

Description: If specified, this will be applied to the items of the object list.

Values: <string>

Default: ""

Content Item Alternating Css Class

Property name: CssClassContentItemAlternating

Description: If specified, this will be applied to the alternating items of the object list.

Values: <string>

Default: ""