

# Change My Password Web Part

---

Web Part Version: 3.0.0.0 MOSS 2007  
Document Version: 3.0.0.0 MOSS 2007  
Date: December 12, 2006

Change My Password 3.0 ▼

You're logged on as: ADVIS Administrator

Current password:

New password:

Retype new password:

## CONTENTS

<b>LICENCE AGREEMENT</b>	<b>3</b>
License Grants	3
License Restrictions	4
Limitation of Liability	4
Free Demo vs. Licensed Full Versions	4
License Activation	5
<b>WHAT'S NEW</b>	<b>7</b>
<b>PLATFORM</b>	<b>7</b>
<b>KNOWN LIMITATIONS</b>	<b>8</b>
<b>INSTALLATION</b>	<b>8</b>
Upgrade from previous versions	9
<b>USAGE</b>	<b>10</b>
Overview	10
Enabling the password policy feature	10
Use credentials to access password policies and usernames	11
<b>WEB PART PROPERTY REFERENCE</b>	<b>12</b>
General Settings	12
User & Password policy	13
Labels & Messages	15
<b>FREQUENTLY ASKED QUESTIONS</b>	<b>17</b>

## LICENCE AGREEMENT

YOU USE THIS PIECE OF SOFTWARE ON YOUR OWN RESPONSIBILITY. ADVIS RESERVES THE RIGHT NOT TO BE RESPONSIBLE FOR ANY DAMAGE CAUSED BY THE USE OF THIS SOFTWARE. BY INSTALLING AND USING THE SOFTWARE, YOU ARE CONFIRMING YOUR ACCEPTANCE OF THE SOFTWARE AND AGREEING TO THE TERMS OF THE LICENSE AGREEMENT.

### IMPORTANT:

THIS SOFTWARE LICENSE AGREEMENT IS A LEGAL AGREEMENT BETWEEN YOU (EITHER AN INDIVIDUAL OR A SINGLE ENTITY) AND ADVIS AG. READ IT CAREFULLY BEFORE INSTALLING AND USING THE SOFTWARE. BY INSTALLING AND USING THE SOFTWARE, YOU ARE CONFIRMING YOUR ACCEPTANCE OF THE SOFTWARE AND AGREEING TO THE TERMS OF THIS LICENSE AGREEMENT. IF YOU DO NOT AGREE TO THE TERMS OF THIS LICENSE AGREEMENT, THEN DO NOT INSTALL THE SOFTWARE.

### License Grants

Your license rights under this license agreement are non-exclusive. In the event that you fail to comply with this license agreement, ADVIS may terminate the license and you must destroy all copies of the Software.

#### License Grants Single Server License

The **Change My Password** Web Part single server license grants you the right to install and use the **Change My Password** web part on one SharePoint server (physical server). On this server, the web part can be used on an unlimited number of virtual servers, sites, areas and pages and by an unlimited number of users.

#### License Grants Server Farm License

The **Change My Password** Web Part server farm license grants you the right to install and use the **Change My Password** web part on an unlimited number of SharePoint servers (physical servers), as long as these servers belong to the same SharePoint server farm. The term "SharePoint server farm" is defined in this context as a group of SharePoint servers, using the same SharePoint configuration database on the same database server. On these servers, the web part can be used on an unlimited number of virtual servers, sites, areas and pages and by an unlimited number of users.

#### License Grants Enterprise License

The **Change My Password** Web Part enterprise license grants you the right to install and use the **Change My Password** web part on an unlimited number of SharePoint servers (physical servers) within your company. On these servers, the web part can be used on an unlimited number of virtual servers, sites, areas and pages and by an unlimited number of users.

#### License Grants Trial License

The **Change My Password** Web Part trial license grants you the right to install and use the **Change My Password** web part on an unlimited number of SharePoint servers (physical servers) within your company. On these servers, the web part can be used on an unlimited number of virtual servers, sites, areas and pages and by an unlimited number of users.

The trial license will expire at a specified date. After this date, the license becomes a free demo license.

### License Grants Free Demo Version

The free demo version of the **Change My Password** Web Part can be freely copied, installed and used on as many servers and by as many users as you want.

### License Restrictions

The granted permission is subject to the following restrictions:

1. The origin of this software must not be misrepresented; you must not claim that you wrote the original software.
2. The software may not be included in any part of commercially available software packages which are sold for any value.
3. The software may not be merged, modified, adapted, translated or altered in any form.
4. The software may not be disassembled, inherited, decompiled, reverse engineered, or otherwise broken down to determine source code origin and alter source code logic.

### Limitation of Liability

This software (**Change My Password** Web Part) is provided 'as-is', without any express or implied warranty. In no event will the authors be held liable for any damages arising from the use of this software. ADVIS provides no guaranteed technical support for the software aside from the forums on the web site <http://sharepoint.advis.ch>.

### Free Demo vs. Licensed Full Versions

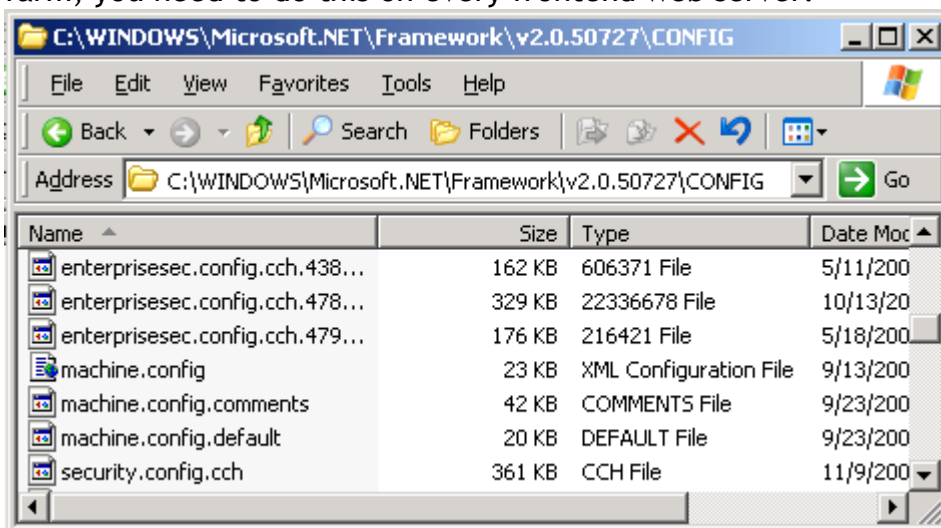
The only difference between the free and the full versions of **Change My Password** is that the free demo version shows a copyright notice at the bottom of the web part.

## License Activation

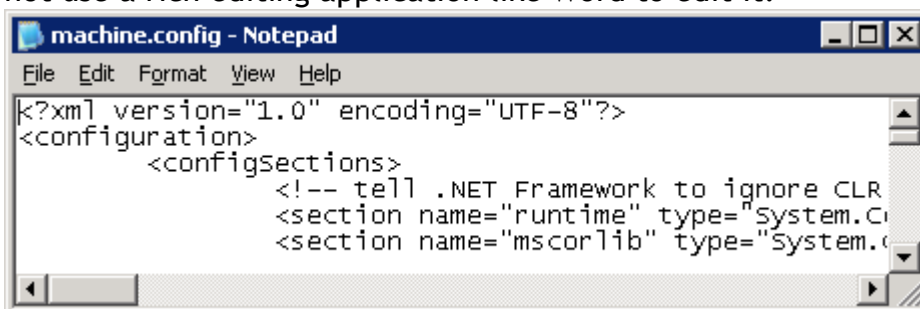
Upon purchasing the web part, you will get a license code (activation code) from us. This license code has to be entered in the configuration file "machine.config" (or web.config) on every server the web part will be used.

Here are the details on how to do this:

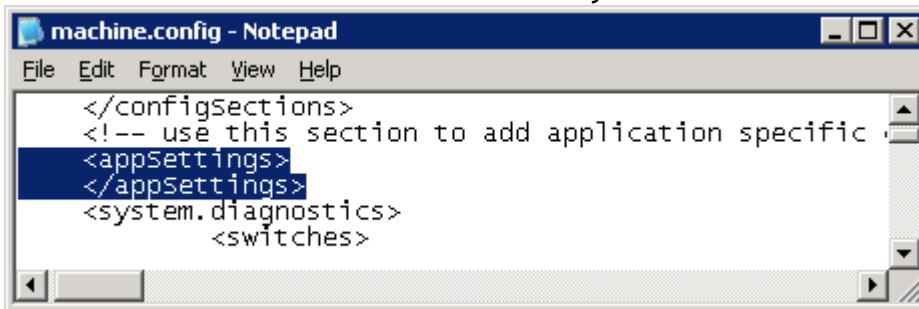
1. Upon purchasing, you will get a license code from us. This license code will look something like this:  
FRtroYyaCsNb+7pNdEENJrIJ7/ZowUBuFHuyaV2oXBfinYrBm6IYMW7N+B3c46S5
2. Locate the file machine.config on your SharePoint server. If you run a SharePoint server farm, you need to do this on every frontend web server.



3. Open machine.config with a text editor like Notepad. Machine.config is a plain text file. Do not use a rich editing application like Word to edit it!



4. Locate the <appSettings> section in machine.config. Make sure this section isn't commented out with <!-- ... --> as it is by default.



```
machine.config - Notepad
File Edit Format View Help
</configSections>
<!-- use this section to add application specific
<appSettings>
</appSettings>
<system.diagnostics>
  <switches>
```

5. Insert a line like this:  
`<add key="ADVIS.WebParts.webpartname.Licensecode" value="liccode" />`  
Replace *webpartname* with the actual name of the web part (ChangeMyPasswordV3) and *liccode* with the license code from step 1 above.  
Valid web part names at this time are SiteNavigator, AreaNavigator, ChangeMyPassword, ChangeMyPasswordV3, ADManager and NavigationTrail.

Example:

```
<add key="ADVIS.WebParts.ChangeMyPasswordV3.Licensecode"
value="FRtroYyaCsNb+7pNdEENJrLJ7/ZowUBuFHuyaV2oXBfinYr7N+B1f46S5" />
```

(without line break)

6. Save and close machine.config.

## WHAT'S NEW

### V3.0.0.0

- New feature: Disable the change-password-fields and labels *new!*
- New feature: Allow to change how the username is shown *new!*
- New feature: Disable the username labels *new!*
- New feature: Allow to change the authentication type to get the username from the Active Directory or local account *new!*
- New feature: Allow to change the authentication type to get the password policies from the Active Directory or local policy *new!*
- Improved the properties view of the web part *improved*
- Improved impersonation to retrieve the usernames and password policies from AD *improved*

### V2.0.0.0

- New feature: change local computer user passwords *new!*
- New feature: display password policies :
  - Password expiration in days *new!*
  - Earliest password change allowed in days *new!*
  - Minimum password length *new!*
  - Password complexity requirements *new!*
  - Password history *new!*
- New licensing model *improved*
- Improved password changing process *improved*
- Added impersonation feature to read account policies from Active Directory *new!*

### V1.1.0.0

- Minor Bug fixes
- New licensing model

### V1.0.0.0

- Initial Release

## PLATFORM

Change My Password web part runs on:

- SharePoint Portal Server 2007
- Windows SharePoint Services 3.0

## KNOWN LIMITATIONS

- 1) If a password change fails, **Change My Password** may not be able to give you the exact reason. But if you set the property "ShowDetailedErrors" to true, **Change My Password** will show the error message it got from Active Directory or the local computer.
- 2) If you try to change your password the second time within the same browser session it will fail. Close and reopen the browser window, then authenticate with your new password.
- 3) If you have a more complex domain controller set-up with domain trusts it may be impossible to change the password and display password policies of trusted domain users.
- 4) The retrieval of password policies from Active Directory is only possible if you run your SharePoint server under an Active Directory service account or alternatively you can specify an account in the configuration for impersonation.
- 5) To work properly, the web part needs to be placed into the GAC by using the installation option '-globalinstall'.

## INSTALLATION

1. Copy ChangeMyPassword\_V3.0.0.0.cab to a local directory on your SharePoint server.

2. Run stsadm.exe with the option addwppack to register the web part the way you like:  
e.g. (line breaks for readability; the whole command is on one line):

```
stsadm.exe -o addwppack  
-filename C:\Temp\ChangeMyPassword_V3.0.0.0.cab  
-globalinstall  
-force
```

stsadm.exe is located at

C:\Program Files\Common Files\Microsoft Shared\web server extensions\12\BIN

Please consult your SharePoint documentation or the command line help (stsadm.exe -?) for more information about installing web parts with stsadm.exe.

Remark:

The web part must be installed into the global assembly cache (GAC) by using the -globalinstall option!

3. Restart IIS (e.g. by running iisreset.exe)

The Change My Password web part is now installed. You can find and use it in the Virtual Server Gallery of your SharePoint server.

## Upgrade from previous versions

The upgrade process depends on what you want to do:

- A. Install the new version of the web part to use it side by side with (a) previous version(s)
- B. Install the new version of the web part to replace all previous versions

### A. Install the new version of the web part to use it side by side with (a) previous version(s)

1. Install the new version of the web part as described above.

### B. Install the new version of the web part to replace all previous versions

1. Install the new version of the web part as described above.
2. Delete the old web part version(s) by using stsadm.exe:  
e.g.:  
`stsadm.exe -o deletewppack -name OldWebPartName.cab`
3. Add a SafeControl entry for the old version to web.config of all web sites on which you use the web part:
  - Open web.config with your favourite plain text editor (a web.config file is located in the WWWroot directory of each of your virtual web servers)
  - Locate the line containing the Change My Password entry of the newly installed version in the <SafeControls> section of web.config
  - Make a copy of this line directly above the existing line
  - in this copied line, edit the version number of Change My Password to reflect your previous version
  - Save and close the web.config file
4. Configure an *assembly redirection*  
"Assembly redirection" means, that every previous V2.x instance of Change My Password on your SharePoint pages will be redirected to the new version 3.
  - Start the Microsoft .NET Framework 2.0 Configuration tool (you'll find it in the "Administrative Tools" of your SharePoint server)
  - In the Configured Assemblies section, view the list of configured assemblies.
    - If there already is a configured assembly entry for Change My Password, open it's property settings
    - If there isn't an existing entry for Change My Password, add a new entry and use the "Choose Assembly..." button to select the Change My Password assembly.
  - Select the "Binding Policy" tab
  - Enter the version range of all previous versions in the "Requested Version" column (e.g. "2.0.0.0-2.9.9.9")
  - Enter the new version number (e.g. "3.0.0.0") in the "New Version" column
  - Ensure that there are no other redirection rows configured
  - Click Apply, OK and exit the Microsoft .NET Framework 2.0 Configuration tool

## USAGE

### Overview

The Change My Password web part lets the currently logged on user change his or her password of the corresponding Active Directory or local computer user account. The web part will distinguish between AD and local accounts and you can choose the method for changing the password.

### Enabling the password policy feature

If you want to use the *Display password policies* feature you have to complete additional steps prior to enabling the web part property. If you plan to enable the feature for the whole server you have to place the additional configuration in machine.config (located at C:\WINDOWS\Microsoft.NET\Framework\v2.0.50727\CONFIG). If you want to enable it for specific virtual servers, edit the configuration in the corresponding web.config of the virtual server. Note, that retrieval of Active Directory password policies needs SharePoint to be running under a domain service account, to provide access to the domain controller. If you have configured your SharePoint server to run under Network Service, see the next section for more information.

1. Enable the *Display password policies property*. You should see the message from *Error Message Password Policy Feature Not Enabled*.
2. Open the web.config or machine.config in the web servers root directory and add the highlighted element to the <appSetting> element, it should look something like this (note, that the element should be on one line):
 

```
<configuration>
...
<appSettings>
  <add key="ADVIS.WebParts.ChangeMyPasswordV3.ShowPasswordPolicy" value="true" />
</appSettings>
...
</configuration>
```
3. Customized the message in property *PwPolicyMessage* to fit your needs.

#### Change My Password 3.0

You're logged on as: ADVIS Administrator

Current password:

New password:

Retype new password:

Your password expires in **n.a.** days.  
 You can change your password in **0** days.  
 Minimum password length is **7**.  
 Password complexity is **on**.  
 Password History is set to **24** entries.

## Use credentials to access password policies and usernames

Perform the following 5 steps to implement and use impersonation of:

- 1) Identify a user account with the necessary access rights to access and read Active Directory information.
  - 2) Add a new Sectiongroup to machine.config or web.config:  
 Open machine.config or web.config depending on if you want to configure the impersonation for the whole physical server (machine.config) or per virtual server (web.config). machine.config is located at C:\WINDOWS\Microsoft.NET\Framework\v2.0.50727\CONFIG, web.config is located at the root directory of your web site.  
 Add the following lines in the <configSections> section:  

```
<section name="ADVIS.WebParts.ChangeMyPassword"
type="ADVIS.WebParts.Configuration.ChangeMyPasswordSection,
ADVIS.WebParts.ChangeMyPassword, Version=3.0.0.0, Culture=neutral,
PublicKeyToken=2fb4ce642a9762e6"/>
```
  - 3) Add the user credentials for impersonation in this new Sectiongroup:  
 To do that, add the following lines in the <configuration> section:  

```
<ADVIS.WebParts.ChangeMyPassword>
  <ImpersonationCredentials>
    *   <credential key="UserNameCredentials" username="Domain\Username-of-the-
          impersonation-user" password="Password-of-the-impersonation-user"/>
    **  <credential key="PwPolicyCredentials" username="Domain\Username-of-the-
          impersonation-user" password="Password-of-the-impersonation-user"/>
  </ImpersonationCredentials>
</ADVIS.WebParts.ChangeMyPassword>
```
  - 4) To encrypt this section use aspnet\_regiis.exe\*\*\*:  
 Go to start - run - type cmd init and press enter  
 Change directory:  

```
cd "C:\WINDOWS\Microsoft.NET\Framework\v2.0.50727"
```

 Encrypt the section:  

```
aspnet_regiis.exe -pef "ADVIS.WebParts/ChangeMyPassword" "physical-path-to-your-
config-file-directory" and press enter
```
  - 5) Set Change My Password impersonation properties:  
 On the page containing Change My Password edit Change My Password's properties:  
 - Choose the option "UseHashedCredentials" in the authentication type of the username and/or passwordpolicy - Ensure that the option "Key name of the hashed credential" ("UserNameCredentials" and/or "PwPolicyCredentials") matches the key name (key=...) specified in step 3 above.
- \* For retrieving the usernames from the Active Directory  
 \*\* For retrieving the password policies from the Active Directory  
 \*\*\* To get help for this command, type "aspnet\_regiis.exe /?" to decrypt: change -pef to -pdf

## WEB PART PROPERTY REFERENCE

### General Settings

#### *Allow to display the username*

*Property name:*UserLabel

*Description:* Setting this property to false will cause Change My Password to hide the username and the “Logged on as:” label.

*Values:* <boolean>

*Default:* True

#### *Allow to change the password*

*Property name:*ChangePassword

*Description:* Setting this property to false will cause Change My Password to hide the password change fields and labels.

*Values:* <boolean>

*Default:* True

#### *Display password policies*

*Property name:*ShowPwPolicy

*Description:* Setting this property to true will cause Change My Password to retrieve password policy settings from active directory and display them to the user. For security reasons, this functionality maybe needs additional configuration in the web.config, see chapter *Enabling the password policy feature* for more information.

*Values:* <boolean>

*Default:* false

#### *Display more detailed error messages*

*Property name:*ShowDetailedErrors

*Description:* Setting this property to true will cause Change My Password to show more detailed error messages if the password change fails.

*Values:* <boolean>

*Default:* false

## User & Password policy

### *Name authentication type*

*Property name:* AuthenticationTypeU

*Description:* Which authentication method (RevertToSelf or UserHashedCredentials) is used to get the username from the local profile or from the Active Directory.

*Values:* <enum>

*Default:* RevertToSelf

### *User name type for AD-user*

*Property name:* UserNameTypes

*Description:* How the username is shown (First and Last-name, DisplayName, Domain\Username or Username@Domain).  
For sure the username must be specified in the profile of the user.  
*Domain\Username is always available.*

*Values:* <enum>

*Default:* DisplayName

### *User name type for local user*

*Property name:* UserNameLocalTypes

*Description:* How the username is shown (Workgroup \User and Fullname).  
For sure the username must be specified in the profile of the user.  
*Workgroup \User is always available.*

*Values:* <enum>

*Default:* Workgroup \User

### *Key name of the hashed credentials for username*

*Property name:* UserNameCredentialsKey

*Description:* The key name of the hashed credentials stored in the configuration files. See chapter *Use hashed credentials to access username* for more information.

*Values:* <string>

*Default:* "UserNameCredentials"

### Password policy authentication type

**Property name:** AuthenticationTypePW

**Description:** Which authentication method (RevertToSelf or UserHashedCredentials) is used to get the password policy from the local policy or from the Active Directory.

**Values:** <enum>

**Default:** RevertToSelf

### Key name of the hashed credentials for password policy

**Property name:** PwPolicyCredentialsKey

**Description:** The key name of the hashed credentials stored in the configuration files. See chapter *Use hashed credentials to access password policy* for more information.

**Values:** <string>

**Default:** "PwPolicyCredentials"

### Password policy message

**Property name:** PwPolicyMessage

**Description:** The message is displayed if ShowPwPolicy is enabled and additional configuration is placed into the web.config. You can use HTML codes and place the available placeholders to fit your needs:

<maxD>	Days till password expires.
<minD>	Days until password can be changed again.
<minL>	Minimal length of new passwords.
<cplx>	Password complexity feature is <b>on</b> or <b>off</b> .
<hist>	Amount of password history entries.

**Values:** <string>

**Default:** "Your password expires in <b><maxD></b> days.<br>You can change your password in <b><minD></b> days.<br>Minimum password length is <b><minL></b>.<br>Password complexity is <b><cplx></b>.<br>Password History is set to <b><hist></b> entries."

## Labels & Messages

### *Logged on as Label*

*Property name:*LabelLoggedOn

*Description:* Label to be shown in the left column of the logon name row.

*Values:* <string>

*Default:* "You're Logged on as:"

### *Current Password Label*

*Property name:*LabelCurrentPassword

*Description:* Label to be shown in the left column of the current password input field.

*Values:* <string>

*Default:* "Current Password:"

### *New Password Label*

*Property name:*LabelNewPassword

*Description:* Label to be shown in the left column of the new password input field.

*Values:* <string>

*Default:* "New Password:"

### *Retype New Password Label*

*Property name:*LabelRetypeNewPassword

*Description:* Label to be shown in the left column of the retype new password input field.

*Values:* <string>

*Default:* "Retype New Password:"

### *Change Password Button*

*Property name:*LabelChangePasswordButton

*Description:* Caption on change password button.

*Values:* <string>

*Default:* "Change Password"

### Success Message

*Property name:* SuccessMessage

*Description:* Message to be shown if the password was successfully changed.

*Values:* <string>

*Default:* "Password changed successfully"

### Error Message Password Match

*Property name:* ErrorMessagePasswordMatch

*Description:* Error Message to be shown if the entered new passwords do not match.

*Values:* <string>

*Default:* "Error: New passwords do not match."

### Error Message Wrong Password

*Property name:* ErrorMessageCurrentPassword

*Description:* Error Message to be shown if the entered current password is incorrect.

*Values:* <string>

*Default:* "Error: Authentication failed."

### Error Message Failed

*Property name:* ErrorMessageFailed

*Description:* Error Message to be shown if the password change failed.

*Values:* <string>

*Default:* "Error: Change password failed."

### Error Message Password Policy

*Property name:* ErrorMessagePwPolicy

*Description:* Error Message to be shown if retrieving the password policies failed.

*Values:* <string>

*Default:* "Error: could not retrieve password policy"

## Error Message Password Policy Feature Not Enabled

*Property name:* ErrorMessagePwPolicyFeatureNotEnabled

*Description:* Message to be shown if the retrieval of the password policies was omitted because of missing configuration values.

*Values:* <string>

*Default:* "The password policy feature is disabled on the server. Please contact your system administrator or consult the web part documentation on how to enable it."

## FREQUENTLY ASKED QUESTIONS

- Q** When I try to change password using the "Change My Password" web part. I get following error.  
"Error: Change password failed.  
[A constraint violation occurred.]"
- A** Check the password policies in the domain security policy. Make sure your password change does not interfere with your password policies.
- Q** Is it possible to change the password of the user on 2 different domains at the same time?  
I've an ISA Server on a domain, and a standalone with SharePoint on another.  
I've created the same logins (In the local users list) on the ISA server to improve the security (my users are authenticated through ISA Server for some access) .  
So if the user will change its password, I want to change it on the 2 servers.
- A** Sorry, the "Change My Password" web part is intended to change the password of your Active Directory or local machine account. It is not possible to change the password of two accounts.
- Q** I can only change the password one time... The second time, I get the message "Error: Change password failed". The error message also says that the password doesn't correspond to the criteria (length, complexity...) but it does...
- A** Please check your Active Directory password policy (Default Domain Policy - Computer Configuration - Windows Settings - Security Settings - Account Policies - Password Policy).  
  
Probably there is a minimum password age policy set.  
  
Note that if you change your password multiple times, it may be good to close your browser window between password changes.
- Q** We set the minimal password age policy of domain2 to 0 and then we synchronized the AD domain controllers, but we are still having the same problem.
- A** Make sure you changed the minimal password age in the "Domain Security Policy" and NOT the "Domain Controller Security Policy".